

# Bromley Heath Road DOWNEND

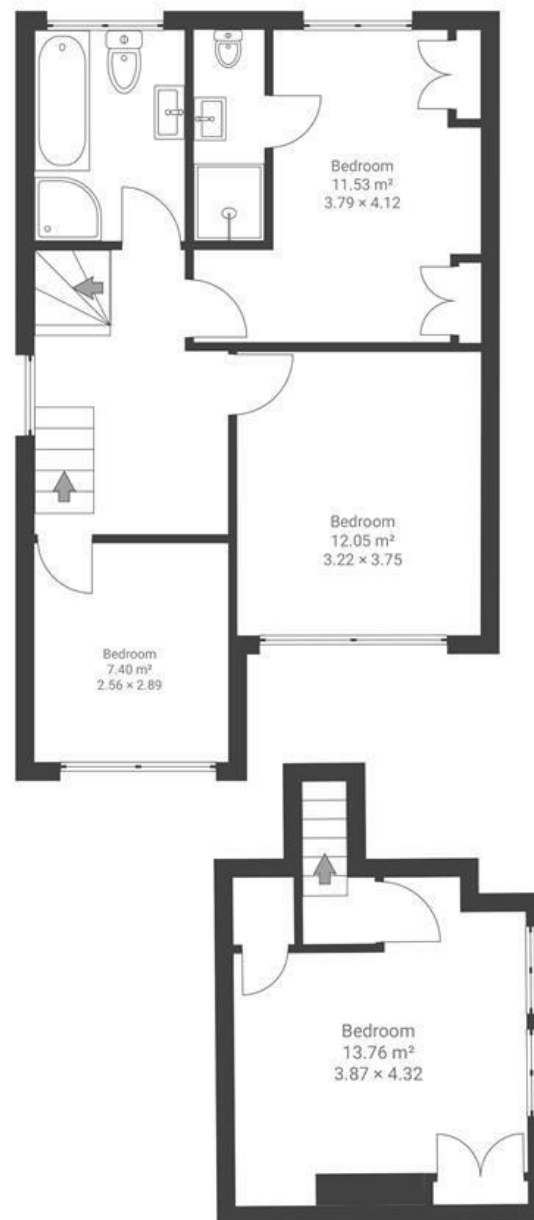
APPROXIMATE FLOOR AREA  
133.2 SQM / 1433 SQFT



GROUND FLOOR



FIRST FLOOR



Boardwalk

# Bromley Heath

## , BRISTOL



£499,950



4 Bedrooms



BS16 6HZ



2 Bathrooms

*"We had a toddler and a new baby when we moved to Bromley Heath Road and quickly became part of this very close community. Our children went to the local infant/junior school which has held an Ofsted outstanding rating for many years. It has great bus routes into the city of Bristol and also to surrounding areas and great transport links.*

*There are a great selection of local shops, pubs and restaurants and lovely country walks on our door step. We have lovely neighbours and we all look out for each other. It really has been the most happiest of times."*

